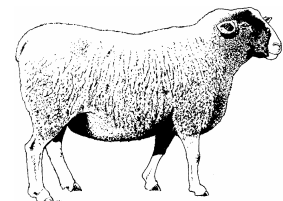
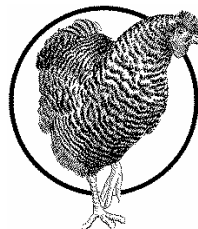
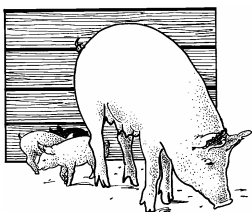




Rare Breeds at Sedgwick County Zoo

In the past farm animals were chosen for specific characteristics that were beneficial to a farmer, and then bred to keep and/or strengthen these traits. As small family farms became less common some of these breeds lost their popularity and are now rare. As you visit the American Farm read about the rare breeds at our Zoo and then list the characteristics that were beneficial to a farmer. Please, read all graphics for answers to these questions.

Animal	Characteristics
Ex: Jersey Cow	produces creamy milk, milk has high milk-fat content

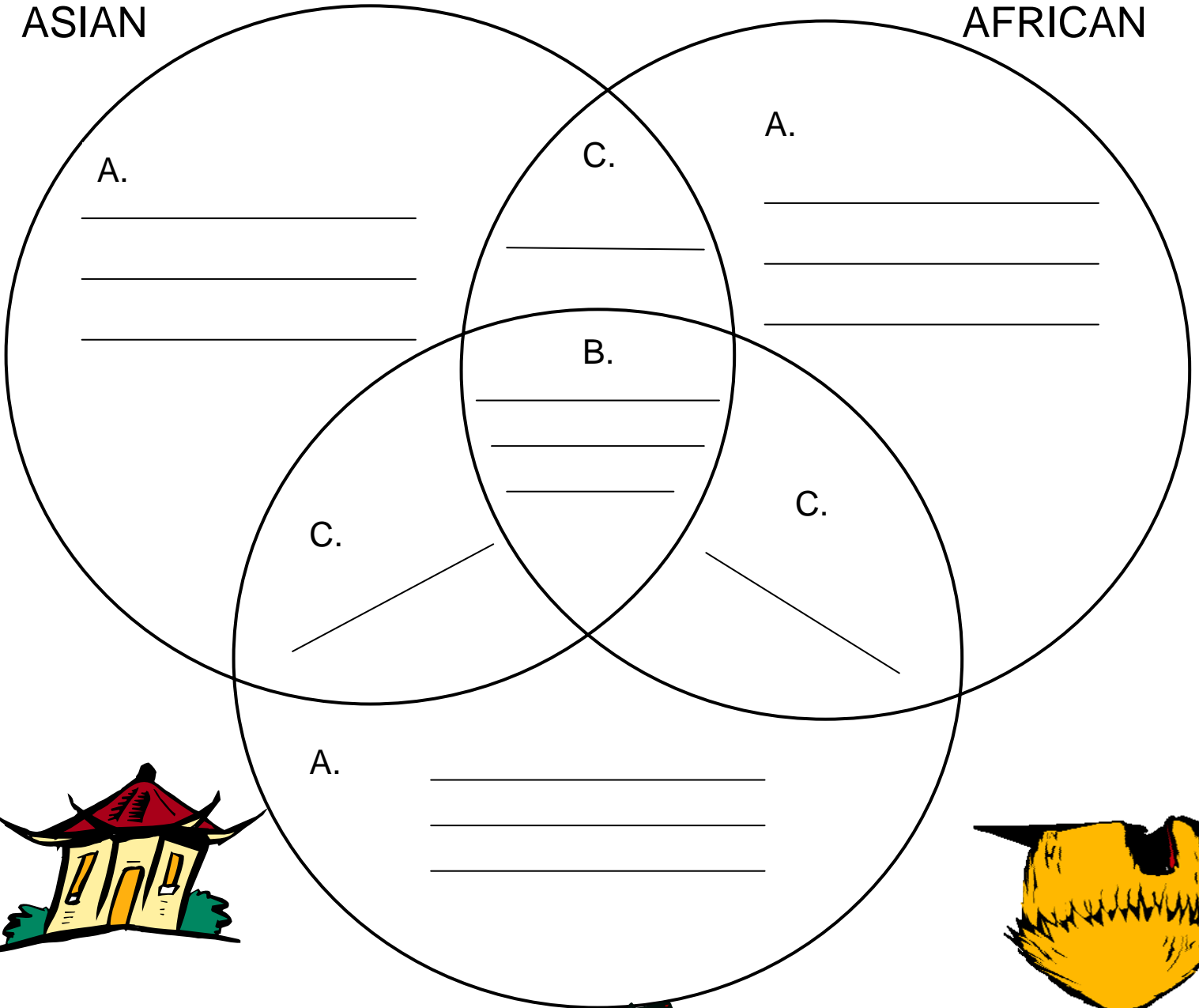


After visiting all three farms complete the following diagram. You will need to find:

- A. 3 things that are unique about each farm
- B. 3 things that are the same in all farms
- C. 1 thing that is found in 2 of the farms but not the other

ASIAN

AFRICAN



AMERICAN

Possible Answers for Diagram for Teacher Use

A.

Asian: "swimming pool" for animals, bridge, pigeons

African: camel, goats, thatched roof

American: bathrooms, rabbits, guinea pigs, can enter the barn

B.

barns, sand, cows, pigs, sidewalks, geese, sheep, feeders, ponds

C.

Asian/African: animals with humps

African/American: long horns on cattle, ZooKeys, horse family (horse, donkey)

American/Asian: chickens, ducks